

Installer's Guide

Anti-Cold Airflow Control Kit

WARNING: HAZARDOUS VOLTAGE - DISCONNECT POWER BEFORE SERVICING

ALL phases of this installation must comply with NATIONAL, STATE AND LOCAL CODES

IMPORTANT — This Document is **customer property** and is to remain with this unit. Please return to service information pack upon completion of work.

ATTENTION INSTALLING PERSONNEL

As a professional installer you have an obligation to know the product better than the customer. This includes all safety precautions and related items.

Prior to actual installation, thoroughly familiarize yourself with this Instruction Manual. Pay special attention to all safety warnings. Often during installation or repair it is possible to place yourself in a position which is more hazardous than when the unit is in operation.

Remember, it is **your** responsibility to install the product safely and to know it well enough to be able to instruct a customer in its safe use.

Safety is a matter of common sense...a matter of thinking before acting. Most dealers have a list of specific good safety practices... follow them.

The precautions listed in this Installation Manual are intended as supplemental to existing practices. However, if there is a direct conflict between existing practices and the content of this manual, the precautions listed here take precedence.

DESCRIPTION

The anti-cold airflow kit is a temperature sensitive fan speed controller. In the heating mode, by monitoring the indoor unit coil temperature and providing an input signal to the controller, control the indoor unit fan start delay. Get a better heating experience.

NOTE: These kits are applicable to the following models

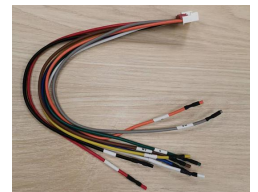
Model
EAHATN-24
EAHATN-36
EAHATN-48
EAHATN-60

PARTS LIST FOR KITS

Item	No.	Qty.
PCB Board	/	1
Signal Wires Set	/	1
Coil Sensor	/	1
Grey Wire(for motor)	/	1
Installer's Guide	/	1



PCB Board



Signal Wires Set



Coil Sensor



Grey Wire

Figure 1

KIT INSTALLATION



HIGH VOLTAGE

DISCONNECT ALL POWER BEFORE SERVICING OR INSTALLING THIS KIT. MULTIPLE POWER SOURCES MAY BE PRESENT. FAILURE TO DO SO MAY CAUSE PROPERTY DAMAGE, PERSONAL INJURY OR DEATH.

Kit Installation Step:

1. Disconnect all sources of power to the unit.
2. Remove the front panel of indoor unit.
3. Replace the new PCB board, see Figure 2.
4. Add the grey wire to motor wire set, and adjust the wire of 1/2/3/4/5 according to SCHEMATIC DIAGRAM, see Figure 3.
5. Add the Coil Sensor to PCB and Coil, see Figure 4.
6. Connect all wires to PCB according to the SCHEMATIC DIAGRAM, see Figure 5.
7. Check the dip switch position, see Figure 6.

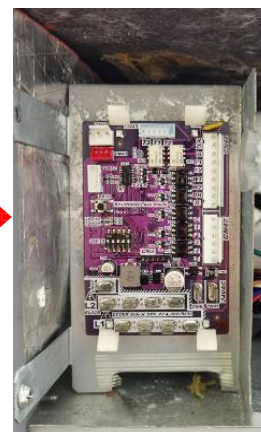
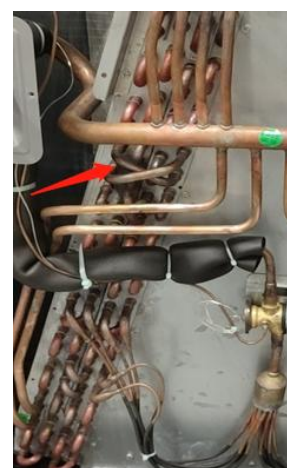


Figure 2



24K/36K



48K/60K

Figure 4

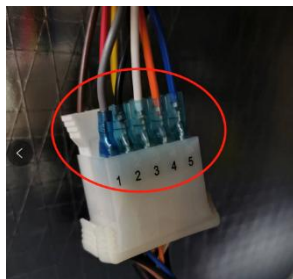


Figure 3

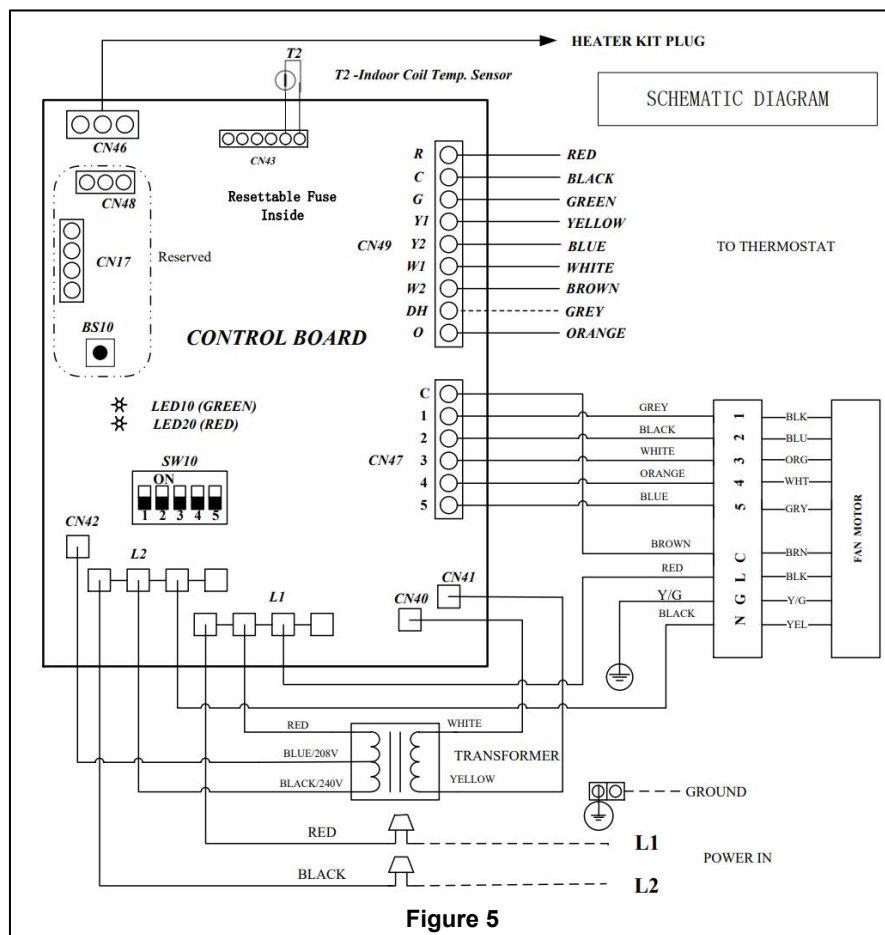


Figure 5

Requirement setting for the Kit

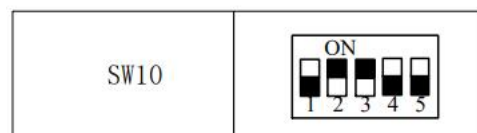


Figure 6

NOTES:

1. The Resettable Fuse inside for 24V circuit.
2. If connected to 1-stage thermostat jump Y1 and Y2.
3. Use copper wire(75C min) only between disconnect switch and unit.
4. Rewired in accordance with NEC and local codes.
5. Connect signal wires of CN49 as required, wrap unused wires up separately with CAP.
8. When need to change the transformer stage, swap the BLACK and BLUE wires on the transformer at the control board(L2 and CN42).